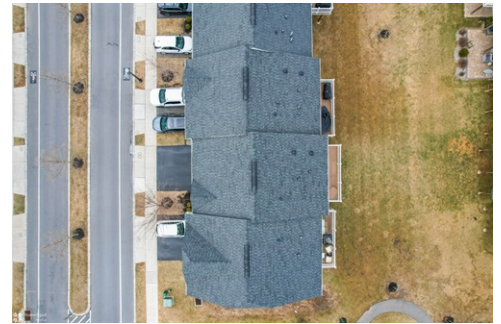




\$ 429,900



2306 Cook Drive, Bethlehem, Bethlehem, PA 18045

- » Beds: 3 | Baths: 2 Full, 1 Half
- » MLS #: 753459
- » Single Family | 2,407 ft²
- » More Info: 2306Cook.IsForSale.com



Jeffrey Torchia
REALTOR®
(610) 360-6466 (Direct:)
(610) 282-1333 (Office:)
marketing@homespotmedia.com



Preferred Properties Plus
7001 Route 309
Coopersburg, PA 18036
(610) 282-1333

Remarks

This stunning 3-bedroom contemporary townhome offers both style and convenience, with easy access to NY, NJ, and nearby shopping. The Mendelssohn Model features a 2-car garage and a Luxury Package with over \$20,000 in upgrades, making it stand out from the rest. Upgrades include rich mahogany-finished hardwood floors, elegant staircases, and a gourmet kitchen with upgraded granite countertops, a center island breakfast bar, and a half bath on the main level. Step outside to a spacious composite deck, perfect for outdoor relaxation. The third floor boasts a luxurious owner's suite with a tray ceiling, large walk-in closet, and upgraded en-suite bathroom with a tiled shower. Two additional generously sized bedrooms, a second full bath, and a laundry room with a sink complete this level. The fully finished basement features walkout sliders and provides direct access to the large 2-car garage. Freshly painted and meticulously maintained. this home is truly move-in ready. Wired Ethernet network for high-speed internet.

